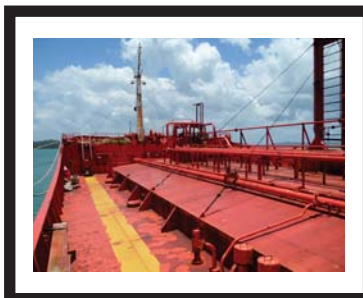


JATAÍ



JATAÍ

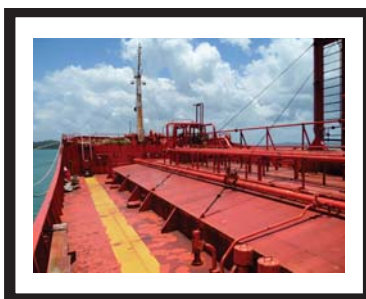
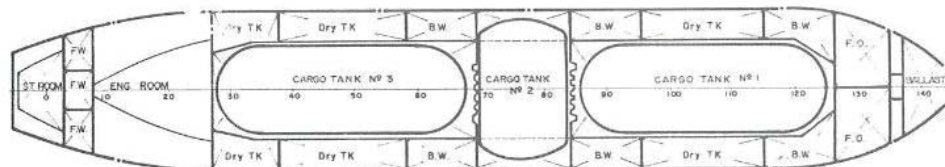
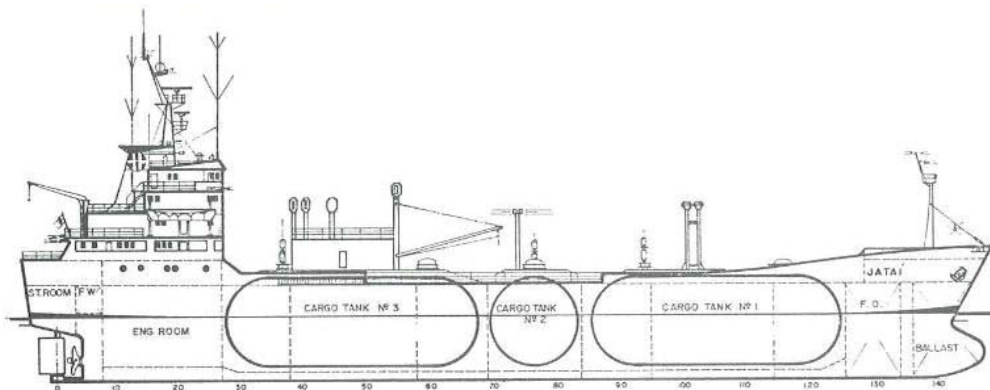
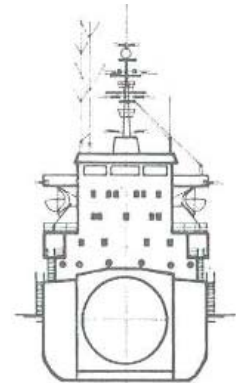
NH3/LPG/VCM + GAS CARRIER
 PO. FITTED CARRIER - 4,113 cbm

BUILDER - TOMAS RUIZ DE VELASCO, Bilbao Spain
 (built in accordance with IMCO regulations)
 DELIVERY DATE - 21/11/79
 CLASS SOCIETY - Bureau Veritas I3/3E, Liquefied
 Gas Carrier USCG approved
 PORT OF REGISTER - Rio de Janeiro
 GROSS TONNAGE (Intern.) - 2.493,14
 DEADWEIGHT - 4.452 MT
 OVERALL LENGTH - 102.00 m
 LENGTH b.p. - 94,40 m
 BREADTH (moduled) - 16,50 m
 DEPTH (moduled) - 10,00 m
 DRAFT ON SUMMER LOAD LINE - 6,22 m
 FULL CARGO - VCM - 6,22 m
 Propane - 5,42 m
 MAIN ENGINE - 1, Pielstick, type 6 PC 2.5 L400
 CSR 3900 BHP
 AUXILIARY ENGINES - 2, B & W, type 5T - 23 LH, 725 BHP each

CARGO PUMPS - 3 deepwell, Svanehoj, type NH
 125/100 3K + 1, capacity per pump 125 m³/h 110 m.l.c
 CARGO BOOSTER PUMPS - 2, Svanehoj, type
 NIP 100, 150 m³/h, 90 m.l.c
 CARGO COMPRESSORS - 3, Sulzer, type
 K105 - 2B - labyrinth 450 m³/h each
 CARGO-HEATER -, Villa Bonaldi
 CARGO LINES - 2 Fully independent systems for gas.
 One special system for Propylene Oxide.
 MAX. PRESSURE - 6.4 kg/cm2 (B.V) 4.2 kg/cm2 (USCG)
 MINIMUM TEMPERATURE 48°C
 CARGO MANIFOLD - Height above summer draft - 5,65 m
 Side distance - 2,70 m
 Height above deck - 1,80 m
 Distance from fore - 54.00 m / Distance from AFT 48.00 m
 INERT GAS GENERATOR - 1, Smit Ovens, Nijmegen
 type GIN 450 - 450m³/h
 BALLAST - 11 wing and central tanks, 2000m³ total
 capacity, 2 pumps 85m³/h, 25 m.l.c

CARGO TANKS

Volume Compart.	100% CU. Meters	Material
Tk1	1611	Carbon Steel
Tk2	891	Carbon Steel
Tk3	1611	Carbon Steel
Total	4113	



JATAÍ

